

## ~ CORNERBROOK FARM ~



**CYCLISTS ARE WARMLY WELCOMED** to our modernized century old brick home with central air, on our six generation, 200 acre working farm in Bruce County. Some of the finest beef is produced on our farm.

We are centrally located between Walkerton, Kincardine & Paisley on a paved road.

We have two open staircases, restored hardwood floors, handmade quilts by hostess in each guest room and a smattering of antiques to add a flavour of the past. We also have one room with country decor and twin beds.

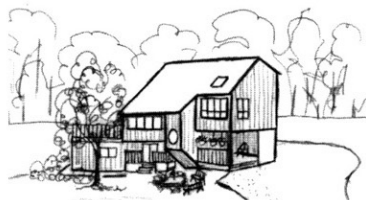
After a day of cycling in the area, relax in our gardens, strolling and viewing over seventy varieties of perennials or sit and enjoy our shady maples and walnut trees. Listen to the trickle of the fountain as you sit on our garden bench and enjoy a Bruce County sunset.

Enjoy your healthy, hearty breakfast and your evening dinner served in our spacious dining room where the tea and coffee pots are always available.

Come and enjoy the hospitality plus the peace and quiet of rural Ontario at its best. Smell the fresh air; listen to the silence.



## ~ WHISPERING BROOK ~



**WE WELCOME ALL CYCLISTS** to make this their "Home away from Home". Our sunny cedar home is located in the "Gateway to Bruce", the village of Mildmay. A friendly place where everyone has a warm "Hello". Visit our unique gift shops with locally handcrafted items.

Enjoy our two acre parklike grounds, relax after a day of cycling as you watch the fish jump in our stocked pond. Our resident swans, "Dutchess Isabella" and "Big Al" will also compete for your attention.

The fallow deer in the paddock on the lawn, love to be fed by hand and we encourage our guests to go in and mingle with them.

As evening gathers, you might enjoy roasting a marshmallow over a campfire, strolling to the local tavern or sitting quietly on the deck as you gaze at the stars and listen to the night sounds.

Your hearty breakfast or home cooked evening meal can be served in our dining area or on our spacious outdoor deck (your choice). Our iced tea and coffee pots are never empty.

Your hosts are amateur cyclists and birders who would love to share their experiences with you. Ours is a nature lover's paradise and we would enjoy showing you around!

## ~ PERENNIAL PLEASURES ~



**A WARM WELCOME AWAITS YOU** in our comfortable modern bungalow furnished in antiques, located in the village of Lucknow.

There are three attractive bedrooms with double beds and you share the two bathrooms with the hostess.

Guests are invited to use the sheltered porch and large deck and to enjoy the colourful perennial gardens. I have hundreds of varieties - Grandma's favourites as well as new hybrids. Lilies in bloom make a magnificent sight. Did you know, they transplant with no shock whatsoever? For those wishing to purchase perennial clumps, most are available at a nominal cost. Ask for particulars if interested.

Come and enjoy our small town hospitality.

### FOR YOUR INFORMATION

- Each day's trip to the next Bed & Breakfast will be approximately 50 km.
- These homes are clean, comfortable, attractive and very well kept.
- All quiet in natural settings.
- All are smoke free homes; smoking outside only.
- Each home has a lounge & T.V. and outside decks to enjoy.

## RESERVATION FORM

Name(s): \_\_\_\_\_

Address: \_\_\_\_\_

Phone: (Home) \_\_\_\_\_

(Bus.) \_\_\_\_\_

Tour Dates: \_\_\_\_\_

### 2003 RATES:

#### TWO DAY PACKAGE:

Single	\$155.00	includes all meals &
Double	\$225.00	accom. for 2 days

#### THREE DAY PACKAGE AT ALL 3 B&B's

Single	\$225.00	includes all meals &
Double	\$335.00	accom. for 3 days

**EACH PACKAGE INCLUDES:  
BED & BREAKFAST, A PACKED LUNCH AND  
HOME COOKED EVENING MEAL.  
BIKE REPAIRS & RENTALS AVAILABLE.**



Prices subject to change  
VISA accepted  
Luggage moved @ .30/km both ways

AMOUNT ENCLOSED: \$ \_\_\_\_\_

(Please do not mail cash)

SIGNATURE: \_\_\_\_\_

Please make cheque payable to:

**JOHN & ELAINE MOFFATT**

R.R. #2, Cargill, Ontario N0G 1J0

Phone: (519) 366-2629 Fax: (519) 366-2275

email: moffatts@bmts.com

or Bruce County Tourist Office

Toll Free: 1-800-268-3838

Ontario, Canada